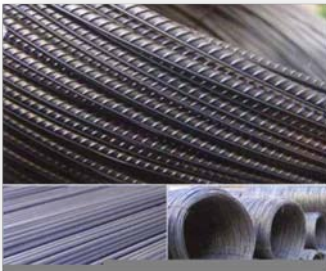
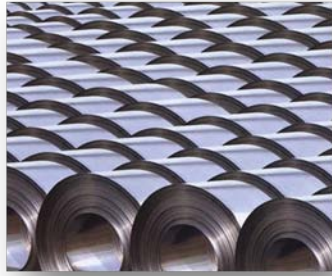




mondial

Mondial Mozambique, LDA

STEEL & CONSTRUCTION DIVISION



It is our mission - the basis of our existence - to successfully develop, supply and approach high quality goods world-wide, contributing to a better quality of life and healthy environment.

Our vision -the future we are striving for- is that: Our customers acknowledge us as the leading service provider and partner when it comes to high quality products-both in terms of performance and environment.

Rua do Porto no.6 (Edifício de Wilson's Wharf), Cidade de Pemba, Provincia de Cabo Delgado - Mozambique

Tel: +258 865 893 022 / +258 866 650 157

sales@mondialmz.com – info@mondialmz.com

www.mondialmz.com



Mondial Mozambique, LDA

Mondial Trading Co. has been providing its customers with uncompromising high quality engineering services since 1994. Since that time we have established business relations with many **manufacturing firms in Turkey, Europe Middle East and Asia.**

Mondial Trading Co. has three divisions:

1. Chemicals
2. Steel
3. Construction Materials



We are regularly and strongly dealing (as import, export and transit business) below countries:

Turkey, China, Vietnam, Bangladesh, Pakistan, India, Sri Lanka, Indonesia, Iraq, Iran, UAE, Syria, Jordan, Nigeria, Oman, Egypt, Ghana, Gine, West Africa, Tanzania, Kenya, Ethiopia, Suriname, Argentina, Brazil, South Korea, Bulgaria, Portugal, England, Nederland.

Growing up with our valued clients, we'll not deny any effort to meet our clients' demand. We wish to dedicate ourselves to our client's business expansion and will continuously to provide quality and reliable services and build up a long-term business partnership with customers now and in the future

Rua do Porto no.6 (Edificio de Wilson's Wharf), Cidade de Pemba, Provincia de Cabo Delgado - Mozambique

Tel: +258 865 893 022 / +258 866 650 157

sales@mondialmz.com – info@mondialmz.com

www.mondialmz.com



mondial

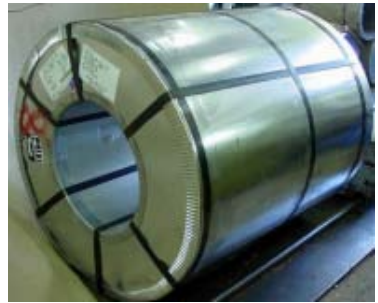
Mondial Mozambique, LDA

PRODUCTS

FLAT STEEL PRODUCTS:

HOT DIPPED GALVANIZED STEEL ("GI") COILS & SHEETS (PLAIN / CORRUGATED)

GRADE	JIS G	ASTM	EN 10142-
	3302	A653	47
CQ	SGCC	CS	DX51D
LFQ	SGCD1	CS	DX51D
DQ	SGCD2	CF	DX52D
DDQ	SGCD3	DDS	DX53D
SQ	SGC	G	S220~S550
	370~570	230~550	
Coating	Z06 ~ Z350		
Mass(g/m ²)			
Thickness (mm)	0.2 ~ 4.000		
Width (mm)	90 ~ 1250		
I.D (mm)	508 / 610		
O.D (mm)	800 ~ 2140		
Coil weight(MT)	3 ~ 22		
Surface finish	Regular Spangle		
	Minimized Spangle		
	Skin Passed		
	Zero Spangle		
Surface Treatment	Chromated (15mg ~ 25mg)		
	Chromated & Oiled		
	Non-chromated but Oiled		



ELECTRIC GALVANIZED STEEL SHEETS & COILS ("EGI")

GRADES: CQ. DQ SQ

Thickness(mm)	0.3~1.6
Width(mm)	600~1,270
Length(mm)	600~5,000
Finishing	
	- Phosphate treatment
	- Oil treatment
	- Anti-finger print treatment
	- Lubricant resin treatment



Coating (one side gms/m²): 8, 16, 20, 24, 30, 40

Rua do Porto no.6 (Edifício de Wilson's Wharf), Cidade de Pemba, Provincia de Cabo Delgado - Mozambique

Tel: +258 865 893 022 / +258 866 650 157

sales@mondialmz.com – info@mondialmz.com

www.mondialmz.com



mondial

Mondial Mozambique, LDA

GALVALUME STEEL (55% ALUMINUM-ZINC ALLOY COATED STEEL SHEETS & COILS) (“GL”)

ASTM A792 (CS, DS SS 255/275/345/550) EN 10215:1995 (DX51/52/53/54/D+AZ) SS 250-550GD JIS3321

Coating Weights

Al-Zn Alloy g/m2:

AZ90, AZ 100 AZ 120 AZ 150 AZ 200

Surface Treatments:

- Chromated
- Anti-finger Print
- Oiled
- Cr-Free

Thickness.mm	0.3-2.5
Width mm	600-1600
Length mm	600-5000
Coil Weight	2-12
Coil ID	508/610



PRE PAINTED STEEL. (GI BASE PPGI), (GL BASE PPGL)

GI & GL are twice painted and baked to give various colored finishes

- Regular Modified polyester
- Special modified polyester
- PVDF
- Embossed, Wood and Stone Prints, etc.
- PVC Film Laminated Metal



BMT Thickness	0.2 ~ 2mm
Paint Thickness	Topcoat : 14 ~ 30 µm Back coat : 5 ~ 18µm Primer : 2 ~ 6µm
Width (mm)	100 ~ 1250
Steel Grade	JIS G3312 : CGCC, CGC340, CGC400, CGC440, CGC490, CGC570 ASTM : CS, FS, SS EN10326: S250GD, S280GD, S320GD, S350GD, S550GD EN10327: DX51D+Z, DX52D+Z



Rua do Porto no.6 (Edifício de Wilson's Wharf), Cidade de Pemba, Provincia de Cabo Delgado - Mozambique

Tel: +258 865 893 022 / +258 866 650 157

sales@mondialmz.com – info@mondialmz.com

www.mondialmz.com



mondial

Mondial Mozambique, LDA

COLD ROLLED STEEL COILS & SHEETS

Grades - Standard Specification

Quality/Grade	EN	DIN	ASTM	JIS
	10130	1623/83		
Commercial			A-366	3141/96
Drawing	FEP01	St.12	A-619	SPCC
Deep Drawing	FEP03	RRSt.13	A-620	SPCD
Extra Deep Drawing	FEP04/05	RRSt.14	A-620	SPCE
Super EDD	FEP06			SPCEN

Type	Cold Rolled Closed Annealed(CRCA) Cold Rolled Full Hard (CRFH) CRNGO SILICON STEEL
Width	60 mm - 1525 mm
Thickness	0.14 mm - 3mm/
Surface Finish	Matte, Bright, Dull
Finishing Facilities	Slitting



HOT ROLLED SHEETS PLATES & COILS

EN10025: 1994 S275J2G3 S275JR S275JO S355J2G3 S355JO S355JR

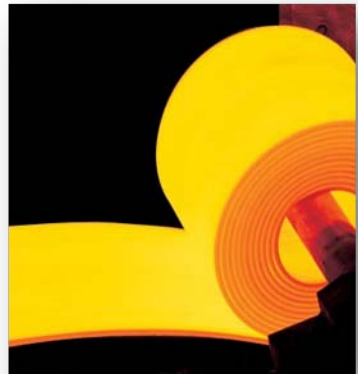
ASTM 570, 572, 573: Gr. 33, Gr36, Gr50, Gr58, Gr70

API 5L: X42 X46 X52 X56 X60 X65 X70

JIS G3101 SS400

GB 3275: Q235, Q275 Q355 (A –B)

Width	180 mm - 2000 mm
Thickness	1.60 mm - 25.00 mm
Coil Weight	25 MT (max)
Oiling	Conventional/Electrostatic
Length (sheet)	2000mm-12000mm
Packing	As per customer specification



Rua do Porto no.6 (Edifício de Wilson's Wharf), Cidade de Pemba, Provincia de Cabo Delgado - Mozambique

Tel: +258 865 893 022 / +258 866 650 157

sales@mondialmz.com – info@mondialmz.com

www.mondialmz.com



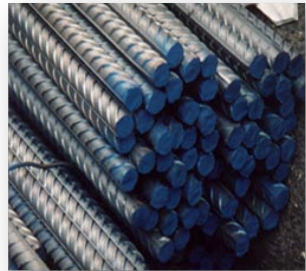
mondial

Mondial Mozambique, LDA

LONG STEEL PRODUCTS

HIGH TENSILE REINFORCED STEEL BARS (Re-bars)

ASTM A615		BS 4449
Grade	N/MM2 Min. Yield Strength	MPA Min. Yield Strength
40	280	460
60	420	OR
75	520	500



Diameter 8mm up to 40mm Length: 6M,9M,12M or less

STEEL PILE

Spiral Welded Steel Pipe Pile

Production Standarts: API 5L, EN, GOST, AFNOR, AWWA, BS, UNI, DIN, ASTM, TS EN, ISO

Diameter: \varnothing 219,1mm- \varnothing 3566mm (8"-140")

Wall Thickness: 4.0mm-30.0mm (0,157"-1,2")

Length: 4.0m – 18.0m

Coating Specification:

- Epoxy Coating
- Galvanizing
- Polyurethane Coating
- Polyethylene Coating
- Polypropylene Coating

Origin: Turkish



Structural / Construction Steel

ANGLES,

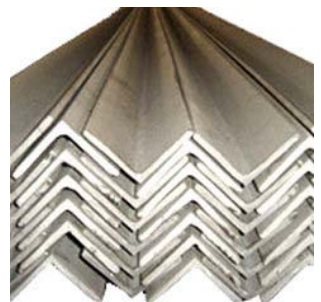
Standard: GB/T 700-1988

Material: SS330, SS 400, SS490, S235JR, S 355JR, Q195-235, Q345

Size: 16*16-200*200

Thickness: 1.2mm - 20mm

Length: 6-12M



Rua do Porto no.6 (Edifício de Wilson's Wharf), Cidade de Pemba, Provincia de Cabo Delgado - Mozambique

Tel: +258 865 893 022 / +258 866 650 157

sales@mondialmz.com – info@mondialmz.com

www.mondialmz.com



Mondial Mozambique, LDA

CHANELS

Standard: GB/T 700-1988

Material: SS330, SS 400, SS490, S235JR, S 355JR
Q195-235/Q235B

Size: 63-300mm * 40 85mm * 4.8-7.5mm

Length≤12M.



H BEAM

Standard: GB/T 11263-2005

Material: SS330, SS 400, SS490, ST37-2S235JR, S 355JR,
Q235B, Q345B

Size: 100*100 TO 900*300MM

HEA100-500, HEB100-500

Length: 12M/6M,



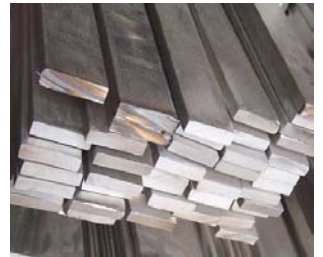
I BEAM

Material: MILD STEEL SS330, SS 400, SS490, S235JR,
S 355JR, Q195-345

Size: H 100-360MM * 68-136MM * 4.5-10MM,

IPEAA 100-160, IPE 80-300

Length: 6-12m.



FLAT BARS

Thickness: 3-60mm

Width: 4-800mm

Grade: MILD STEEL. SS 490, SS 400, SS 330, S235JR,
S 355JR

Q195, Q235

Length: 6m – 12M



SQ BARS

Materials: MILD STEEL. SS330, SS 400, SS490,
S235JR, S 355JR

Q195, Q235

Size: 6*6mm TO 80*80mm,

Length 3M -12M



STEEL PIPES AND FITTINGS

Petroleum Pipe, Casing Pipe,

Anti-corrosive pipe

PSL 1, PSL2

Spiral/ SEAMLESS/ERW Pipe:

Standard: API SPECS 5L. X 42-X 70

Main steel grade: J55, K55, N80 Etc

OD. 89 TO 820mm 1-24''

Rua do Porto no.6 (Edifício de Wilson's Wharf), Cidade de Pemba, Provincia de Cabo
Delgado - Mozambique

Tel: +258 865 893 022 / +258 866 650 157

sales@mondialmz.com – info@mondialmz.com

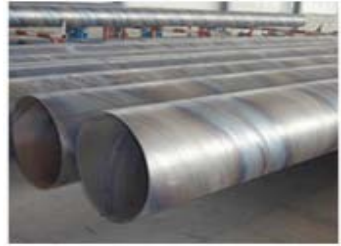
www.mondialmz.com



Mondial Mozambique, LDA

Seamless Carbon Steel Pipe:

Standard: ASTM A106/ASTM A53,
Main steel grade: SS 330, SS 400, SS 490,
ST 37, ST 52, Q 195/235/345 Etc.
SCH 40, SCH 80. OD ½ TO 24''



Galvanized carbon Steel Pipe

Standard: ASTM A-53-1996, Etc
Main steel grade: SS 330, SS 400, SS 490,
ST 37, ST 52, Q 195/235/345 Etc.
Sch 40, Sch 80. OD ½ TO 24''



Welded Carbon steel Pipe

Main steel grade: SS 330, SS 400, SS 490,
ST 37, ST42, ST 52, Q 195/235/345 Etc.

Pipe Fittings:

Elbow, Joints, Flanges, Tees, Reducers,
Valves, Union, Nipples, Sockets, Strainers, Etc

HOLLOW SECTIONS

Square and rectangular Mild Steel Hollow sections
Black, Bright, Coated, Galvanized.

JIS G 3101, JIS G 3466, ASTM a 500, EN 10219
Steel grade SS 400, SS 490, 235JR, S355JR, Q 195, 235, 345.
20*600 X 20*600mm
Thickness 0.35mm to 15mm



STEEL WIRES

ASTM. BS / EN IS DN STANDARDS
0/18mm to 12mm

- Spring Steel Wire
- PVC Coated Wire
- Galvanized steel Wire (Hot Dipped & Electro-Galva)
- Copper Coated Steel Wire
- High tensile , Low Carbon Steel Wire
- Flat Steel Wire
- Black annealed wire
- Black wire
- Wire Mesh etc.



Rua do Porto no.6 (Edifício de Wilson's Wharf), Cidade de Pemba, Provincia de Cabo
Delgado - Mozambique

Tel: +258 865 893 022 / +258 866 650 157

sales@mondialmz.com – info@mondialmz.com

www.mondialmz.com



mondial

Mondial Mozambique, LDA

**MONDIAL
MOZAMBIQUE, LDA**



Email: sales@mondialmz.com
info@mondialmz.com

Fax: +90 232 755 4250
+90 232 374 3499

Tel: +258 865 893 022
+258 866 650 157

Address: Rua Do Porto No.6
(Edificio De Wilson's Wharf),
Cidade De Pemba, Provincia De
Cabo Delgado - Mozambique

Head Office- Turkey:

Email: sales@mondialtr.com
info@mondialtr.com

Fax: +90 232 755 4250
+90 232 374 3499

Tel: +90 232 755 4230



Our goal is to fully satisfy our clients by providing our clients the most favorable and highest quality service, delivered according to schedule, to suit their requirements. This goal of excellence in service and product delivery has been set as the priority of the management of

Rua do Porto no.6 (Edificio de Wilson's Wharf), Cidade de Pemba, Provincia de Cabo Delgado - Mozambique

Tel: +258 865 893 022 / +258 866 650 157

sales@mondialmz.com – info@mondialmz.com

www.mondialmz.com